

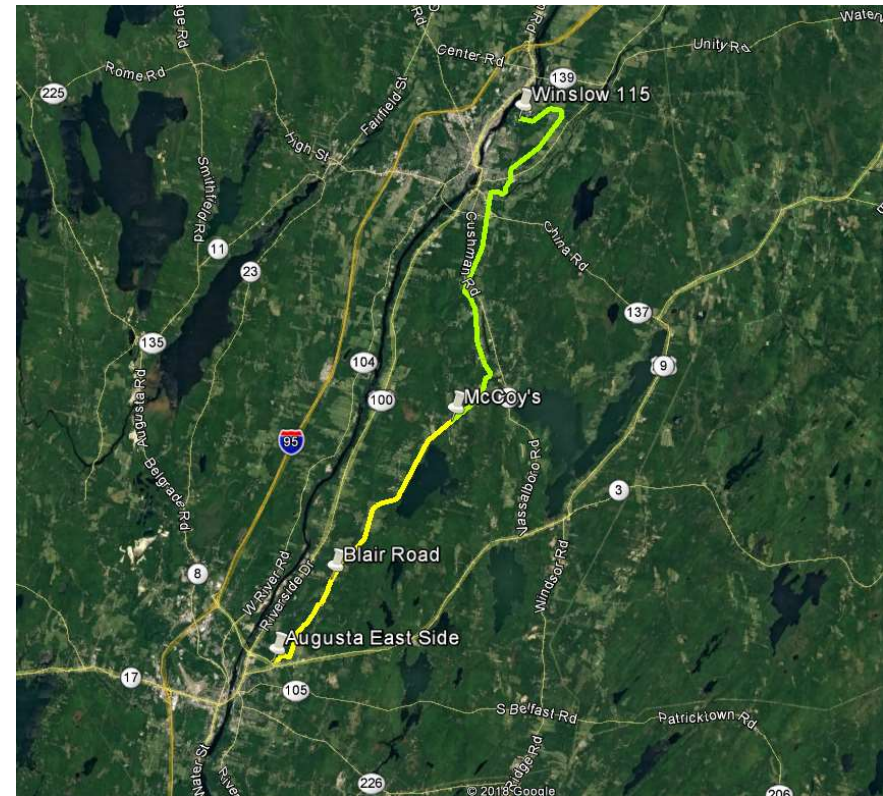
Transmission Line Rebuild

Augusta to Winslow – Section 1

Presentation to Winslow Town Council
August 14, 2023

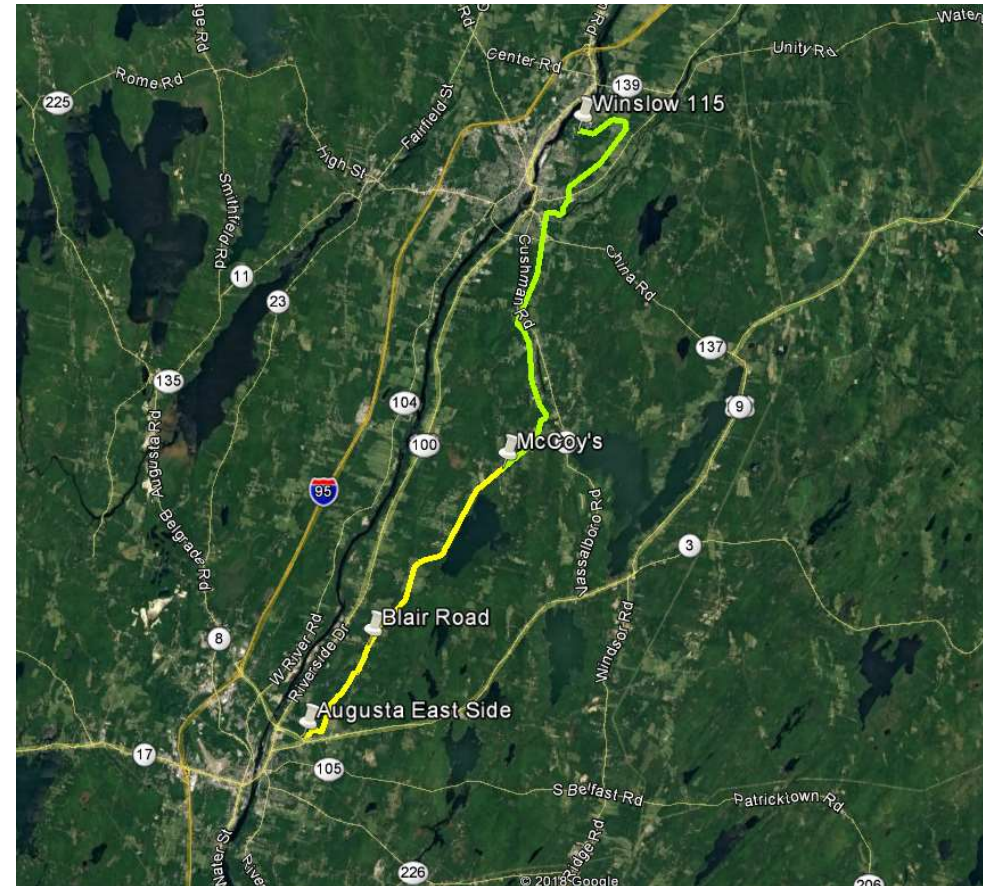
Index

- Current Transmission Line Facts
- Transmission Line History
- Need for Transmission Line Upgrade
- Transmission Line Upgrade Details
- Winslow and Proposed Route Evaluation
 - Analysis and Benefits
 - Pending Regulatory Steps
 - Neighborhoods and Project Steps
- Questions
- Project Outreach Contact Info



Current Transmission Line Facts

- CMP's designation for the line is Section 1
- 23-mile long 34,500-volt (34.5kV) line that runs between substations in Augusta (Augusta East Side) and Winslow (Winslow 115kV)
 - Connects to McCoy's, Blair Road, and South China Substations
- 632 total structures
- Located in the towns of Augusta, Vassalboro, Benton, and Winslow
- Services approximately 7,735 customers
- Right-of-way is cross country and roadside
 - Distribution under build total is ~ 1.5 miles and helps provide service to 3,800 customers
- Wood poles with average height of 40 feet

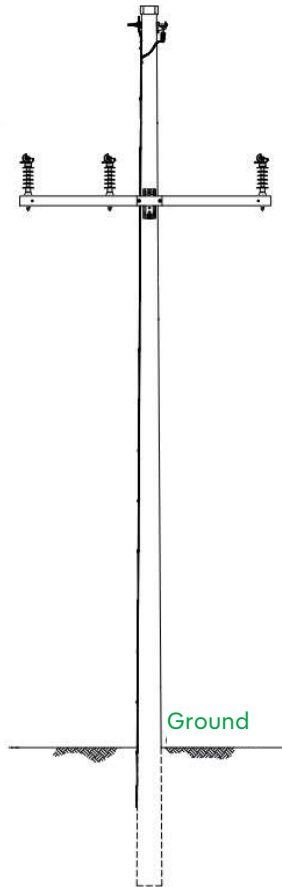


Transmission Line History



- Line was originally built in 1920.
- In 2016, Section 1 was identified through a CMP asset management and structural analysis as having significant structural and reliability concerns.
- In 2018, CMP began the process to rebuild, including design and engineering, permitting, real estate, and outreach.
- A 2019 state law requires Maine Public Utilities Commission (MPUC) approval of any transmission line project in excess of \$5 million. Also, projects undergo a review on whether a non-wires alternative (NWA) would provide better service reliability and cost efficiency over the life of a transmission line project.
- In late July 2022, CMP applied for the Certificate of Public Convenience and Necessity (CPCN) with the MPUC and notified towns and abutters in August 2022.
- CMP, along with the Office of Public Advocate (OPA) and its NWA coordinator, conducted its review and determined that “a cost-effective NWA for the proposed Section 1 upgrade does not exist.”
- MPUC approved the project in June 2023.

Need to Upgrade Transmission Line



Transmission line structure diagram.

Current

- 93 structures failed visual inspection during fall 2020 drone inspection
- Survey & structural analysis in 2021 found 307 out of 632 structures to be structurally inadequate
- Insufficient working clearances
- Aging conductors
- Insulator issues
- No static wire

**Construction Start:
January 2025**

**In-Service Date:
End of 2025**

New

- Full rebuild using steel poles and tree wire
- Wood poles in road Right-of-Ways
- Average pole height of 60 feet
- New structures to be set on an offset
- The line will still operate at 34.5kV

Proposed Route Change in Winslow

Reroute Analysis

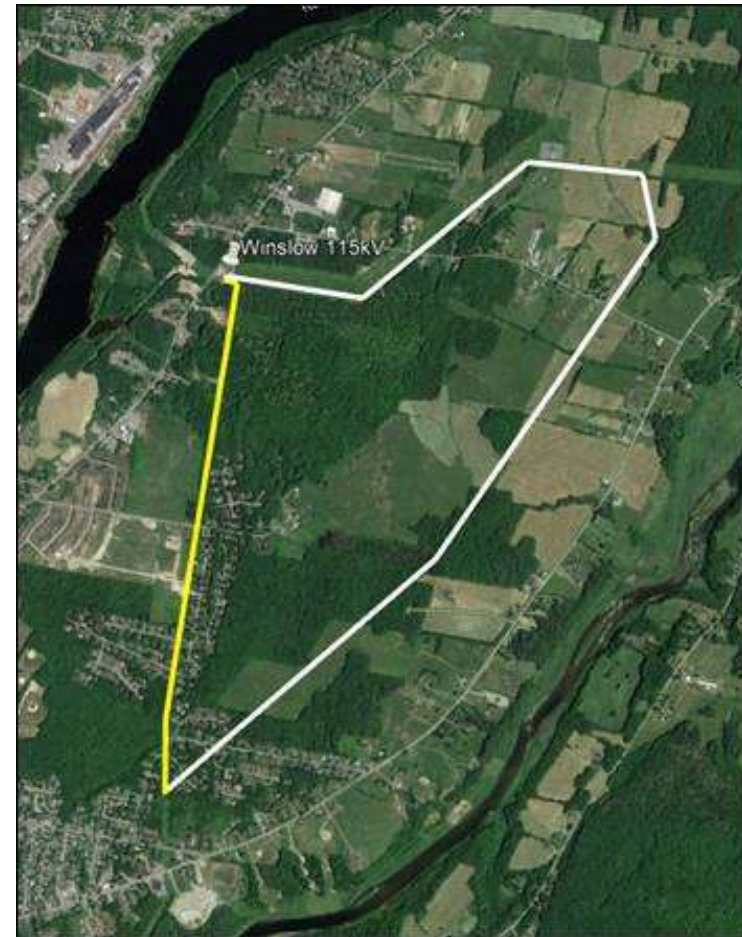
Central Maine Power is studying a re-route of a segment of Section 1 along another existing 34.5kV line (Section 40) to improve service reliability in the Winslow area and reduce project and maintenance costs

- Route in question from near Clinton Avenue (Route 100) to Winslow 115kV Substation (on Benton Avenue)
- 3.8 miles of Section 1 would be eliminated, and the existing structures would be removed
- 2.6 miles double circuited with Section 40

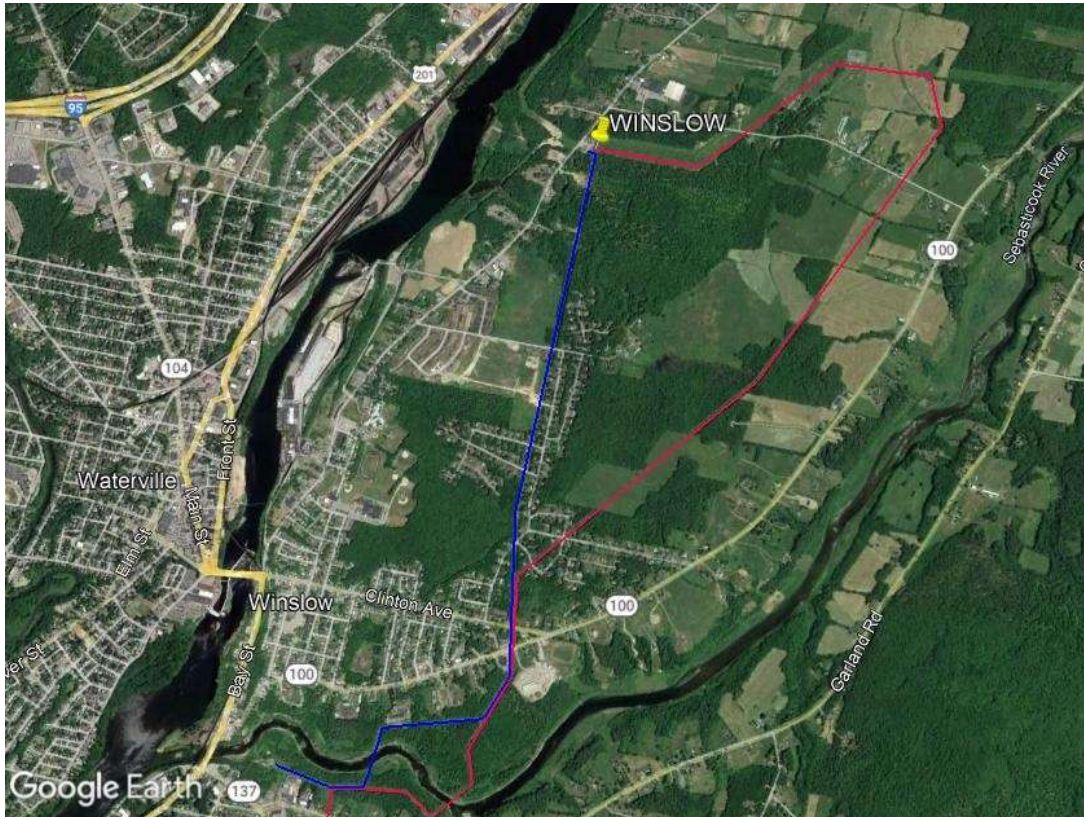
Benefits

**Improved
Reliability**

**Lower Construction
and Maintenance
Costs**



Proposed Route Change in Winslow: Regulatory

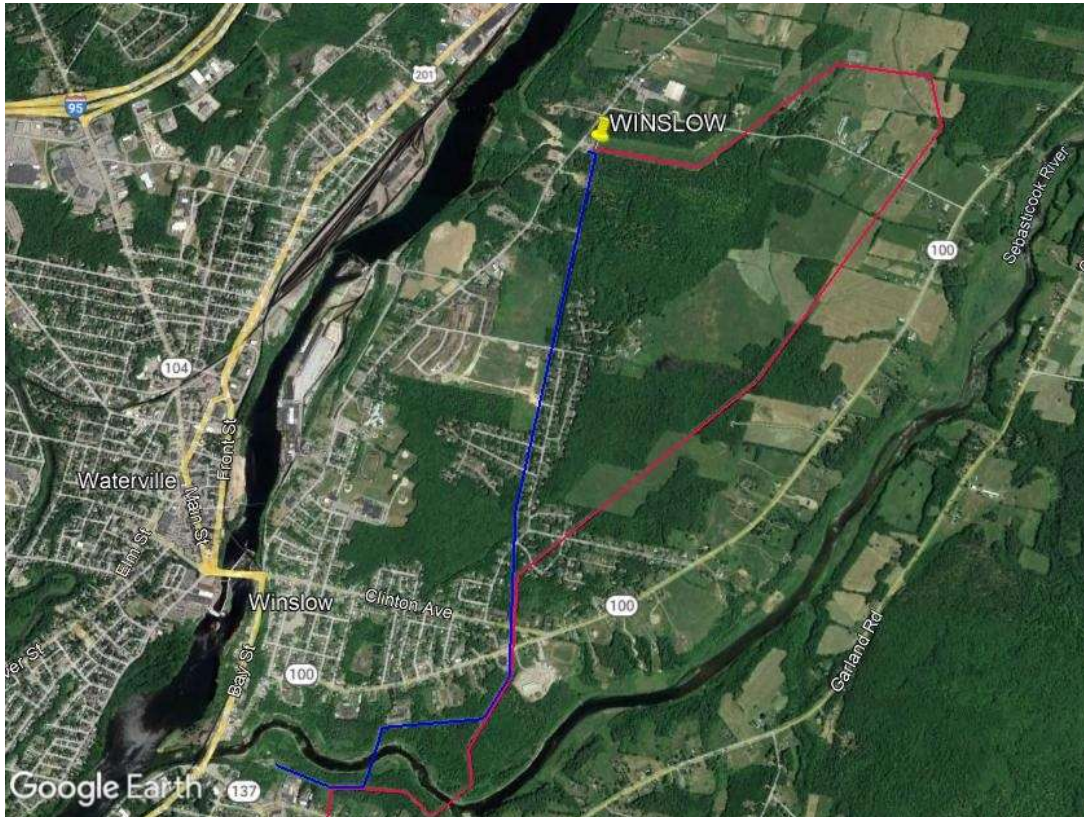


[Maine.gov/mpuc](https://maine.gov/mpuc) Case number: 2022-00244

Pending Regulatory Process

- Upon conclusion of CMP's review comparing the current route of Section 1 to utilizing Section 40, we will notify the MPUC of our findings and possible cost savings.
- CMP will complete its analysis of the new route by the end of 2023 for final MPUC review.
- Once submitted, CMP will notify newly impacted land abutters and the stipulating parties (*CMP, Office of Public Advocate, others*) to allow time for them to participate in the case.

Proposed Route Change in Winslow: Regulatory



[Maine.gov/mpuc](https://maine.gov/mpuc) Case number: 2022-00244

Pending Regulatory Process

- Upon conclusion of CMP's review comparing the current route of Section 1 to utilizing Section 40, we will notify the MPUC of our findings and possible cost savings.
- CMP will complete its analysis of the new route by the end of 2023 for final MPUC review.
- Once submitted, CMP will notify newly impacted land abutters and the stipulating parties (*CMP, Office of Public Advocate, others*) to allow time for them to participate in the case.

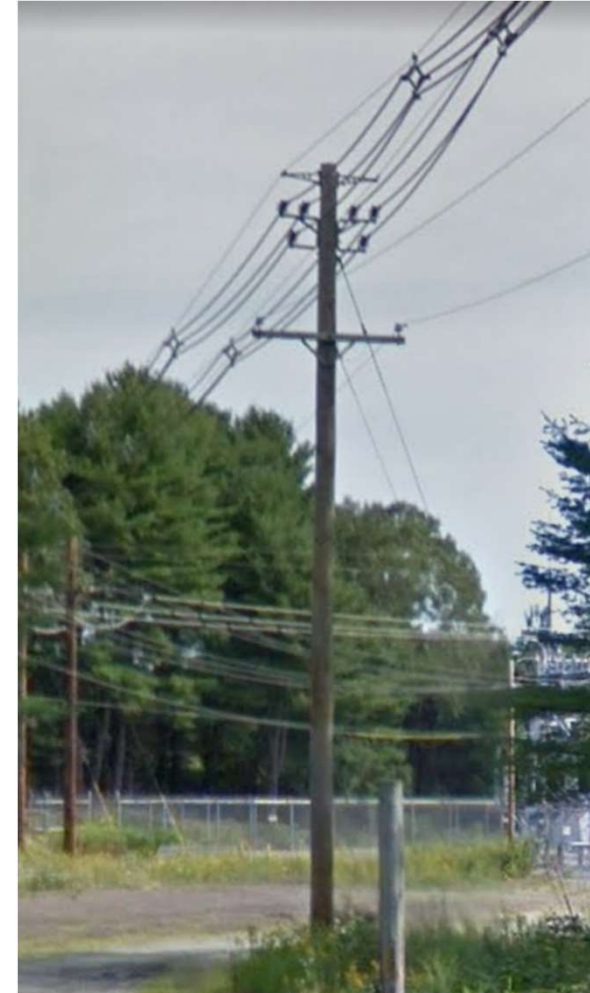
Proposed Route Change in Winslow: Communities

Neighborhoods (South to North)

- Clinton Avenue
- Smiley Avenue
- Warren Terrace
- Frankwood Drive
- Woodlawn Drive
- Primrose Street
- Roderick Road
- Corbett Lane

Project Steps

- Engineering
- Project Permitting (federal, state, and municipal)
- Energy Land Management: Expand rights from “pole only” to a full easement where possible
- Project Outreach: Communications with towns, abutters; website





Questions.



CMP Project Outreach

1.888.267.0831

Outreach@cmpco.com